

iQuartz is engineered in Italy to exacting standards and is now available in New Zealand.



A careful selection of colours offer timeless beauty to compliment any decor and architecture.



Created by Nature

Inspired by Italian Engineering

Crafted for YOU by iQuartz

10 YEAR LIMITED MATERIAL WARRANTY

Product Warranty Every iQuartz surface product comes with a comprehensive 10 Year Limited Warranty so that you can enjoy its beauty and function with added peace of mind.

Care and Maintenance Instructions

Quality

iQuartz® is 93% quartz based making it one of the toughest products on the market today. Combined with the properties of longevity and non-porousness, iQuartz can endure some of the harshest treatment from wine to tea and yet is very easy to maintain and keep clean, using warm soapy water and a damp cloth.

Hygiene

Everyday Cleaning
iQuartz requires very little maintenance to keep the surface looking like new. For everyday, routine cleaning of iQuartz we recommend wiping the surface with warm soapy water (containing a mild detergent) and a damp cloth or alternatively using a quality spray and wipe type cleaner.

Care

Dried Spills and Stains
For the removal of heavy stains use warm soapy water and a sponge or for those stubborn materials such as nail polish, a sharp blade can be used to scrape away any of the excess or a non-abrasive scrubber can also be used.

Durability

Toughest on the Market
iQuartz is incredibly strong and is being used in applications where maximum strength and durability are required such as flooring, kitchens and bathrooms. A testament to its strength and longevity is the use of this product in railway stations, where high flows of foot traffic demand a material that can last the distance.

Preserve

Polishing
iQuartz is non-porous and therefore will keep its qualities of luxurious shine and ultra smooth finish without the need for polishing or sealing of any kind.



Limited New Zealand Warranty

- Nothing in this Limited Warranty affects any rights you may have (if any) under the Consumer Guarantees Act 1993.
- iQuartz gives the following warranty to you in respect of the Slab, subject to the terms and conditions set out below.
- iQuartz warrants that the Slab as supplied by the Supplier was and will remain for a period of 10 years calculated from the date of first installation, free from defects arising from the manufacture of the Slab.
- What is not included in the Warranty.
 - The Warranty does not include any defect in, or damage to the Slab, arising out of any work done on the Slab by the Supplier or any person engaged to install the Slab other than iQuartz or their nominated agents.
 - iQuartz accepts no responsibility for the alteration or installation of the Slab by the Supplier or any other person.
 - The Slab must not be used in any outdoor application, swimming pool, or any other application involving exposure of the Slab to ultraviolet radiation, chemicals, flames or excessive heat.
 - The Warranty will not apply to damage caused by placing hot pots, pans, electric frying pans or oven trays directly onto the Slab.
 - The Warranty will not apply to damage to the Slab caused by paint remover or stripper or cleaning agents which have high alkaline/pH levels and solvents.
 - The Warranty will not apply to damage caused to the Slab by a failure to clean the Slab in accordance with the Care and Maintenance set out in the iQuartz brochure.
 - The Warranty will not apply to damage caused to the Slab, by your supplier not following the fabrication instructions provided by iQuartz, when installing the Slab.
- Time for claim under the Warranty
You must make any claim under this Warranty by giving notice in writing to iQuartz or their nominated agents within thirty (30) days of the occurrence of an event which gives rise to a claim pursuant to the Warranty.
- Statutory Rights
 - These terms and conditions do not affect your statutory rights, if any.
 - These terms and conditions shall not affect any rights you may have under the Consumer Guarantees Act 1993.
 - Subject to any rights you may have under the Consumer Guarantees Act 1993, iQuartz excludes liability for all consequential or indirect losses of any kind (including, without limitation, loss of use of the Slab) and, to the extent permitted by the law, all terms, conditions and warranties, whether implied by custom, the general law, statute or otherwise (other than expressly provided for in this Warranty).
 - Subject to any rights you may have under the Consumer Guarantees Act 1993, the liability of iQuartz or their nominated agents under this Warranty, in contract, tort (including negligence), under statute or regulation or otherwise is limited at the option of iQuartz to:
 - replacing the Slab that is defective; or
 - paying the cost of replacing the Slab that is defective.
- Privacy.
 - In order to provide the Warranty to you, iQuartz requires the details of the purchase of the Slab, including purchase dates, installer, supplier, place of installation and your personal information in order to process your Warranty Claim. For that purpose, it may be necessary to give that information, including information which identifies you personally, to other companies.
 - iQuartz may also prepare aggregated user statistics or information summaries to describe the service of iQuartz and their popularity, to business partners of iQuartz and prospective advertisers, and for other lawful purposes. Such information may be disclosed by iQuartz to other companies appointed by it for this purpose. However, this information will not include information which identifies you personally.
 - Under the Privacy Act 1993, individuals have rights of access to and correction of their personal information held by iQuartz or their nominated agents, or the Supplier.

Technical Information

The nominal dimensions of iQuartz slabs are 3260 x 1650 enabling great flexibility and maximum utilisation of the product.

Find out more For further information about iQuartz products and availability, please visit www.manebenchtops.co.nz

Thickness and Slab Weight

Thickness	Slab Weight	Slab Weight/m2
30mm	402kg	75kg/m2
15mm	201kg	37.5kg/m2

iQuartz Standard

Standard of Quality

iQuartz uncompromising emphasis on product quality is evident by the global demand that drives our constantly growing share of world markets. In addition to our own stringent quality control systems, iQuartz quartz products and plant procedures gain approval from the International Quality System which guarantees that our operation and quality management is completely in accordance with strict ISO 9001: 2000.

Standard of Green Environment

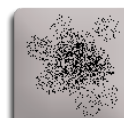
iQuartz is the quartz surface factory to carry the ISO 14001 environmental standard for environmental protection in industry. This means that everything we do is governed by a corporate environmental policy. Our code of ethics begins with safety standards that protect all of our workers, and continues with ecologically friendly production processes.

Standard of Green Building Material

LEED (Leadership in Energy and Environmental Design) is an accredited benchmark developed by the USGBC (United States Green Building Council) for the purpose of rating construction companies and products according to their compliance with ecological standards. iQuartz's high LEED ranking credits entrepreneurs and contractors using our materials with LEED points, thus making iQuartz the natural partner in advanced projects, built according to green construction practices.



QUALITY CRAFTSMANSHIP
10 YEAR LIMITED WARRANTY



MOULD AND MILDEW
RESISTANT



RESISTANT TO MOST
HOUSEHOLD CHEMICALS,
ACIDS AND OILS



COLOUR CONSISTENCY,
SCRATCH AND STAIN
RESISTANT



NON-POROUS - NEVER
REQUIRES SEALING



SUPERIOR STRENGTH
AND FLEXIBILITY



MANE
BENCHTOPS

Mane Benchtops Limited

99a Harris Road,
East Tamaki,
Auckland,
New Zealand.

ph: 09 271 6601

mob: 021 272 2393

fax: 09 271 6603



Capturing Nature's Beauty



10

YEAR
LIMITED
MATERIAL
WARRANTY